

COMPACT AND  
FUNCTIONAL  
CONTINUOUS  
PATIENT  
MONITOR

# M32

MULTI PARAMETER  
PATIENT MONITOR



# M32

## MULTI PARAMETER PATIENT MONITOR FEATURES & FUNCTIONS

### 8 inch Touch Screen & Hard Key



M32 provides High Resolution 8" LCD Touch Screen with a variety of parameters and functions.

With User-Friendly Interface, M32 provides optimized environment to users.

### OxyCRG

OxyCRG is a combination of three trend waves, Beat-to-beat heart rate, SpO2 and Respiration, mainly used in neonatal monitoring.

OxyCRG screen displays Btb HR trend, SpO2 trend and Respiration(IM) waveform.

This screen helps clinicians to identify significant events for neonatal patient.



## IPI(Integrated Pulmonary Index)

IPI is a numerical value on a scale from 1 to 10 which integrates four major parameters in order to provide a real-time indication of the patient's respiratory status.

IPI is calculated from measured parameters—EtCO<sub>2</sub>, SpO<sub>2</sub>, pulse rate and respiration rate.



IPI Value	Color	Patient Status
10	Green	Normal
8~9	Green	Within normal range
7	Yellow	Close to normal range; requires attention
5~6	Yellow	Requires attention and may require intervention
3~4	Red	Requires intervention
1~1	Red	Requires immediate intervention

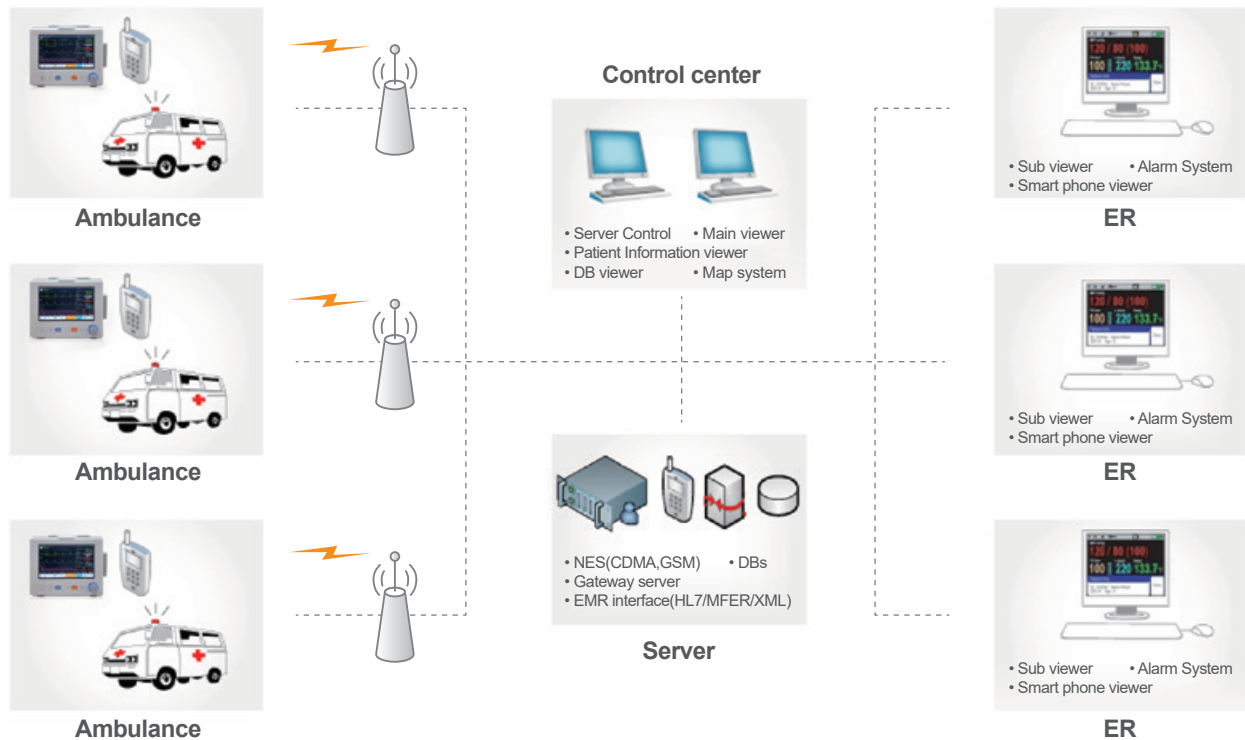
## EMR Network Solution



MEDIANA's network solution provides optimized using environment to users. By using CMS(central Monitoring System), EMR(Electronic Medical Record) link, and barcord input system, M32 allows users to build optimized and efficient integrated hospital system.

# Smart Emergency Medical Care System

M32 allows users to be connected smart emergency medical system which helps medical teams to check patient's vital signs before arrive the hospital via LAN and Wireless.



## Mediana Seoul office

53, Donggwang-ro, Seocho-gu, Seoul, Republic of Korea

TEL. +82-2-542-3375 FAX. +82-2-542-7447

## Mediana HQ / Factory / R&D

132, Donghwagongdan-ro, Munmak-eup, Wonju-si, Gangwon-do, Republic of Korea

TEL. +82-33-742-5400 FAX. +82-33-742-5483

[www.mediana.co.kr](http://www.mediana.co.kr)